

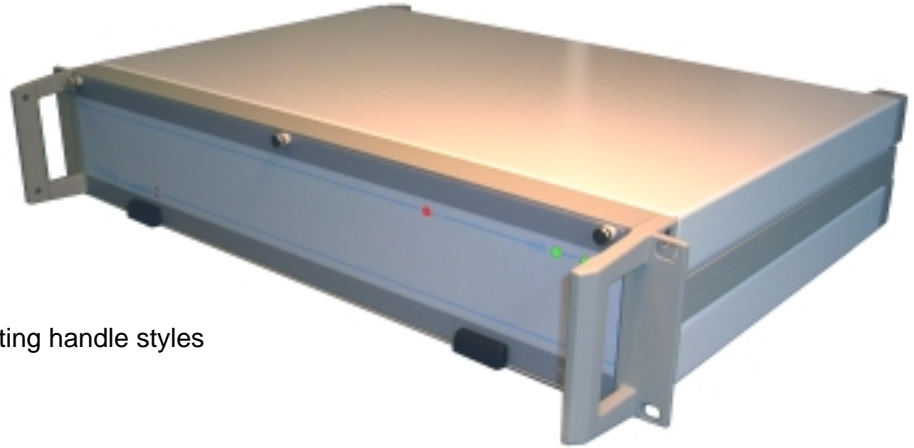
## The DC Powered Micro Analog 2 FE-MM40 Instrumentation System

The FE-MM40 is a DC powered 40 channel data acquisition and signal conditioning system. In common with all chassis styles in the Micro Analog 2 range, it accepts a range of dual channel signal conditioning modules which together cover almost every transducer type. The FE-MM40 has slots for up to 20 dual channel modules. An additional slot is reserved for the optional FE-366-AZ auto zero module which controls the automatic offset removal for any FE-366-TA bridge transducer amplifiers. A further slot is reserved for the FE-357-USBM module and its associated 40 channel multiplexer which provides a USB interface to the system allowing data transfer at 400 kS/s (10 kS/s per channel).

Inputs are via the dual channel 7 pin rear panel connectors which can accept a variety of connector adaptors and outputs are via the 50 way SCSI1 style connector which accepts the FE-MAC40C BNC adaptor unit. When no signal conditioning is fitted to a channel, the 50 way connector and the associated BNC adaptor can be used as 40 signal ended +/- 10V inputs.

### Specification

Dimensions	Height 100 (2U), Depth 375, Width 440.
Weight	Up to 4 kg fully populated.
Material	All metal construction
Options	Rack mounting or bench mounting handle styles
Power	10 - 36 V DC (max current 2A)
Transducer Supply	+10V, +5V and +2.5V.



### Software

Fylde MADAQ software for data acquisition, recording, post processing and playback.

LabView drivers  
DASyLab Drivers  
Windows API for other languages  
e.g.  
Visual Basic, C++, etc.

### Compatible Signal Conditioning Modules

FE-366-TA (Bridge Transducer Amplifier)  
FE-386-TC (Thermocouple Amplifier)  
FE-376-IP (Receiver for current powered accelerometers etc.)  
FE-356-OA (General purpose amplifier)  
FE-346-CA (Carrier amplifier)  
FE-396-FV (Frequency to Voltage)

### Compatible Connector Adaptors

CA-376-IP (Dual BNC to 7 pin input)  
CA-386-TC (Dual thermocouple input and CJC)  
CA-366-TB (Screw terminals to 7 pin input)  
FE-MAC-40C (40 BNC connectors to 50 pin input / output)

